



INSTALLATION, OPERATION AND MAINTENANCE MANUAL



Air Curtain COMPACT FLY

Please, read these instructions carefully before attempting installation

SECURITY ADVISE SYMBOLS



Attention, Danger, Safety Advice!



Danger from electric current or high voltage!



Injuries risk!



Danger! Do not stay underneath: Heavy load.



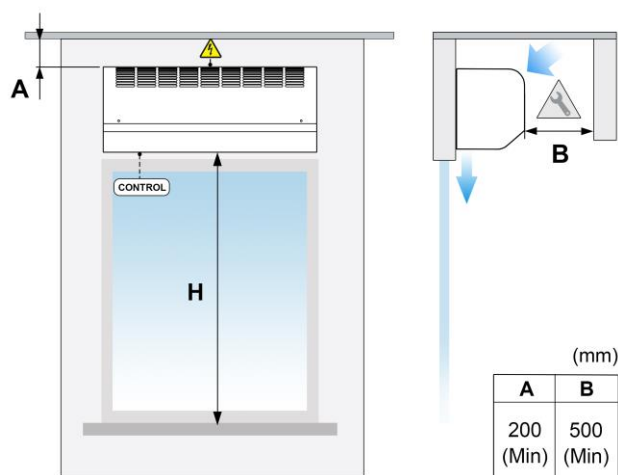
Important information.

INDEX

INSTALLATION	3
Power Supply	3
Fixing	3
STORAGE AND TRANSPORT	3
WORKING INSTRUCTIONS	4
Control PCBoard characteristics	4
Controller's common characteristics	4
Remote control characteristics	4
WIRING DIAGRAMS	4
DATASHEET	6
MAINTENANCE INSTRUCTIONS	7
External cleaning	7
Internal cleaning	7
REPAIRS AND REPLACEMENTS	8
Motor or turbine replacement	8
Fuse replacement	8
Plate replacement	9
ACCESSORIES	9
DECLARATION OF CONFORMITY	10
Air curtain identification	11
GUARANTEE	11

INSTALLATION

Valid for models: **Compact Fly**



MAX. Maximum recommended height, MIN. Minimum recommended distance

H. Valid for all kind of windows.

Minimum recommended distance between the inlet grille and any obstacle is of 200mm.

	<i>Installation work, connection, disconnection, electrical wiring, mechanical maintenance and service must be done by qualified people observing these instructions and in accordance with all applicable norms and standards. If the unit is operated with additional controller, please consider its specific instructions.</i>
	<i>There is no need to open the service door to connect the air curtain. All connections (power supply, control, water pipes when existing) and fixations are external. They are placed on top of the units. See how to open service door at repairs section.</i>
	<i>For safety, the air curtains never have to be stopped by disconnecting them from the main supply, always through the controller and waiting 10 minutes at least to disconnect the main supply. In case to not follow these instructions, the internal parts of the air curtain can be damaged.</i>

Power Supply

To connect the power supply there is a black connection box outside the air curtain (located on top).

For an ambient air, just connect the single phase 230Vx1.

Fixing

Units are provided of several external suspension points, depending on the weight and length of each model (see exact situation of the points at the air curtains characteristics page).

The fixing of the air curtain should be managed according to the weights of each unit shown on the technical data page. The installation can be made through threaded rods, cable tensors or other supports.

See available supports in the accessories section.

STORAGE AND TRANSPORT

	<i>Attention! Heavy load. Do not step underneath hanging load during the transport or assembly.</i>
--	--

Store in a dry place and weather protected in its original packaging. In case the packing is opened, cover the air curtain to protect it from dust. Do not step or put heavy load over the package to avoid damages to the material. Store temperatures are between -20°C and +40°C.

When carrying material, make sure it is not damaged by the forklift (fork penetration in the packaging). Please see the *Packaging* indications.

WORKING INSTRUCTIONS



For safety, the air curtains never have to be stopped by disconnecting them from the main supply, always through the controller and wait for 10 minutes at least to disconnect the main supply. In case of not following these instructions, the internal parts of the air curtain can be damaged.

Control PCBoard characteristics

The PCBoard relays adjust the 2 ventilation speed.

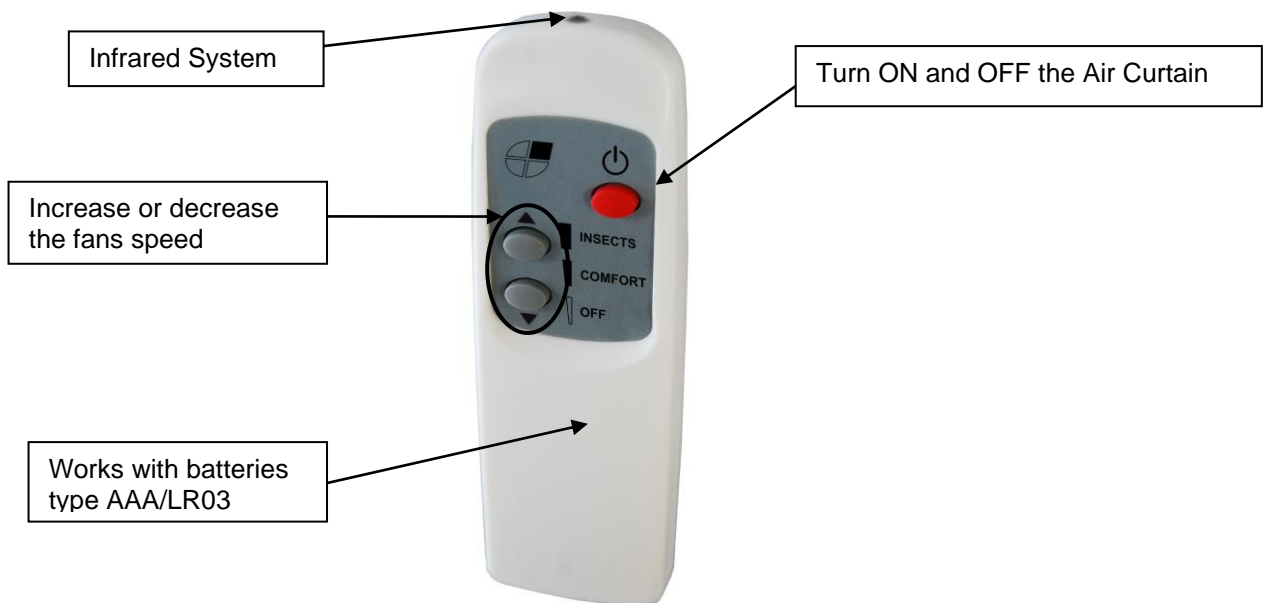
Controller's common characteristics

- **Controllers:** There is an inbuilt keypad controller placed in the service door, which allows to switch the fan speed and the power stage of the electrical element.
- **2 ventilation speed.**
- **Remote control:** All the standard controllers have an IR receiver that works by infrared.



Unheated air curtains controller

Remote control characteristics



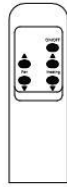
WIRING DIAGRAMS

Following wiring diagrams are enclosed:

For the following models: Compact Fly 600-900

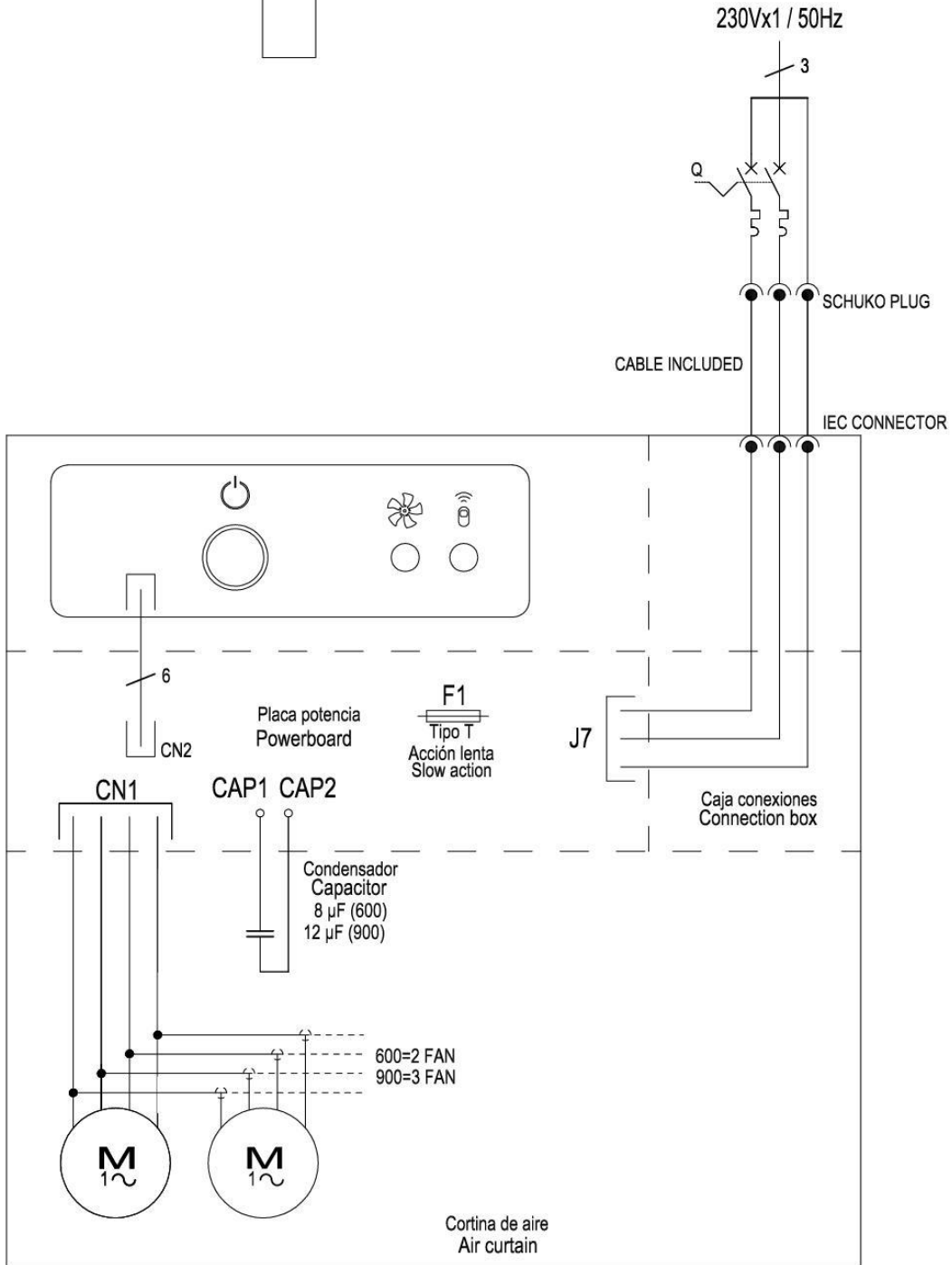
- Only air with standard controller. Diagram: AIRDOE07980

Control remoto
Remote control



Q= Interruptor magnetotérmico
Q= Circuit breaker

230Vx1 / 50Hz



ESQUEMA ELÉCTRICO CORTINA DE AIRE
WIRING DIAGRAM OF AIR CURTAIN

CONTROLADOR 2 VELOCIDADES, CORTINA SOLO AIRE COMPACT FLY 600/900
AIR ONLY AIR CURTAIN, 2 SPEEDS COMPACT FLY 600/900

Pág./ Page 1 de/ of 1
Doc. AIRDOE07980
R0 - 10/10/19

DATASHEET

COMPACT FLY | High Pressure Insect Control Air Curtains For Commercial And Industrial Windows



Characteristics



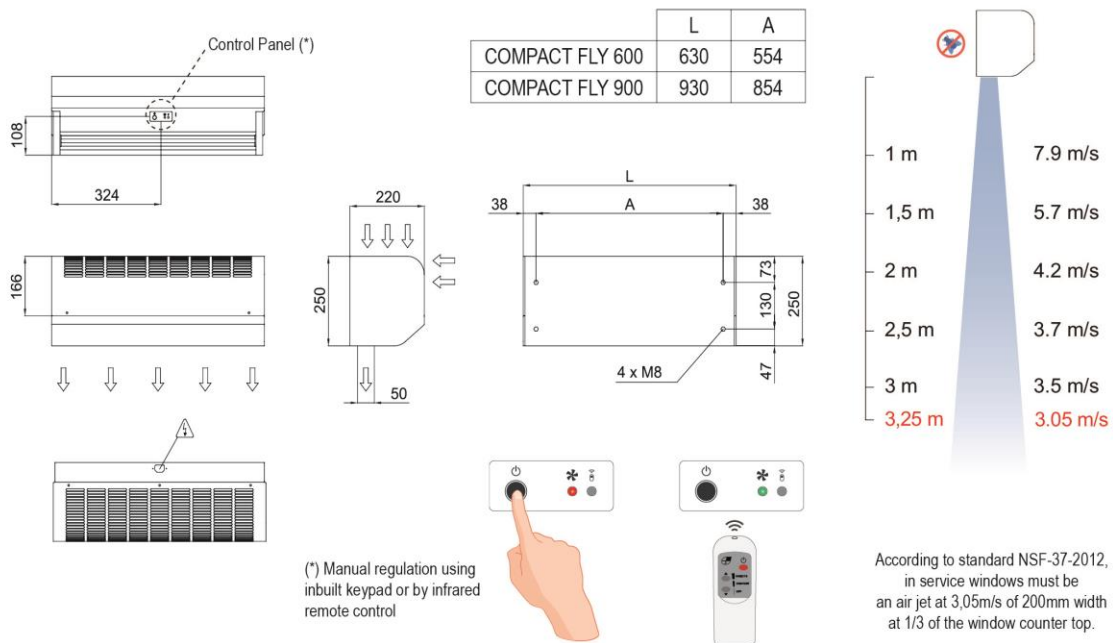
- Specially designed for insects control at windows of food establishments and industries, tolls and kiosks.
- High velocity air barrier to prevent flying insects from entering a building, according to NSF 37 standard.
- Self-supporting casing construction made of galvanized steel plate, finished in structural epoxy-polyester painting white colour RAL9016 as standard. Other colours are available on request.
- Large perforated inlet grille avoiding intensive maintenance.
- Anodized aluminium outlet vanes, airfoil shaped, adjustable in both directions.
- Double-inlet centrifugal fans driven by an external rotor motor with 2-speed selector (comfort and fly mode).
- "A" type without heating, air only.
- Included regulation with infrared remote control and inbuilt keypad with leds.

Specifications

AIR ONLY					
Model	Airflow m ³ /h	Power Fans 230V-50Hz W	Current Fans 230V-50Hz A	Noise Level (5 m) dB(A)	Weight kg
COMPACT FLY 600 A	1150	318	1,43	51/67	13
COMPACT FLY 900 A (*)	1725	478	2,15	52/68	18,5




(*) Provisional data, under revision.

Dimensions



According to standard NSF-37-2012, in service windows must be an air jet at 3,05m/s of 200mm width at 1/3 of the window counter top.

MAINTENANCE INSTRUCTIONS

	<i>For safety, before any cleaning, disconnect power supply using the controller.</i>
	<i>It is forbidden to open the service door (risk of electrical discharge and being trapped in fans). Service and maintenance should be done only by introduced and qualified workers.</i>
	<i>Do not use water or steam for cleaning the internal parts and components of the air curtain.</i>

External cleaning

Air curtains don't need any kind of maintenance except from the cleaning of the casing and the inlet grille.

It is recommended to weekly clean the inlet grille. It's important to make sure that the air curtain is OFF, otherwise the dust mixed with a wet cloth would create a kind of paste that will damage the fan rotor when it sucks the air.

Annual cleaning of the discharge area (outlet).

The casing of the air curtain should be cleaned with a wet cloth and non-aggressive detergent. Do not use caustic soap or acids.



Internal cleaning

In models with micro drilled grille is recommended to clean the inside of the unit with a vacuum at least once every two years (*), best before the winter season, with qualified staff.

(*) These periods are indicative, depending on the ambient conditions of every installation.

In places with a high number of particles in suspension is desirable to increase the frequency of the internal cleaning (including the city centers, near construction sites, etc.).

REPAIRS AND REPLACEMENTS



Installation and electrical connections must be done by qualified workers and following these instructions.



Before any repairs are undertaken, please:



- **Inform people that there is work in progress.**
- **Disconnect the power supply and protect the thermal magnet (so nobody can restart it accidentally).**
- **Make sure there is no tension in the air curtain.**
- **Make sure the fans are stopped.**
- **Use only original spare parts.**

To **open the service door**, follow these steps:

1.- To open the air curtain, first unfasten the inlet grille door with a screwdriver. The number of screws depends on the length of the air curtain.



2.- Once the service door is opened, you can access to do a fan replacement (see Fan replacement part) and PCB replacement (see PCBoard and fuse replacements).

Motor or turbine replacement

Before replacing the fan, inform people that there is work in progress, stop the air curtain through the controller and disconnect main supply. Make sure that the unit is without tension and the fans are stationary.

Unplug the fan from the white connector. Remove the fan by loosening the fixing screws and assemble the new fan following the process in reverse order.



Fuse replacement

Before the replacement, inform people that there is work in progress, disconnect main supply, make sure that the unit is without tension and that the fans are stopped.

Open the inlet grille and unplug the visible cable from the plate and the condenser. The fuse is protected by a plastic box. Pull up the plastic box with the help of a screwdriver and replace the fuse.

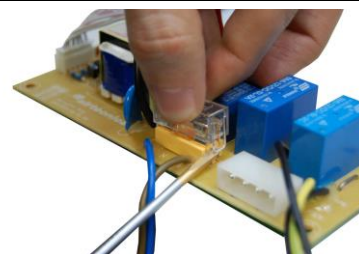


Plate replacement

Follow the steps to remove one of the fans.

Remove the PCB support by loosening the two fixing screws and unplug the visible cables from the plate and the condenser.

Assemble the new PCB following the steps in reverse order.



ACCESSORIES

Supports, vibration dampers, etc. depending on the model.



DECLARATION OF CONFORMITY



Declaration **CE** of conformity / Declaración **CE** de conformidad

Manufacturer **Motors i Ventiladors S.L. (AIRTÈCNICS)**
Fabricante **Conca de Barberà 6, Pol. Ind. Pla de la Bruguera**
08211 Castellar del Vallès (Barcelona) Spain

We declare, under our sole responsibility, that the product(s)
Declaramos, bajo nuestra única responsabilidad, que el/los producto(s)

Air Curtains
Cortinas de aire

with models
con los modelos

Minibel, Optima, Recessed Optima, Windbox, Recessed Windbox, Smart, Dam, Deco, Kool, Variwind, Rotowind, Invisair, Rund, Zen, Duojet, Triojet, Max, Recessed Dam, Recessed Compact, Maxwell

is/are developed, designed and manufactured in accordance with the following directive(s)
ha(n) sido desarrollado(s), diseñado(s) y fabricado(s) de acuerdo con la(s) siguiente(s) directiva(s)

Low Voltage Directive 2014/35/UE
Directiva Baja Tensión 2014/35/UE

Electromagnetic Compatibility Directive 2014/30/UE
Directiva Compatibilidad Electromagnética 2014/30/UE

Restriction Certain Hazardous Substances Directive 2011/65/EU (RoHS)
Directiva Restricción Substancias Peligrosas 2011/65/EU

Eco-design Energy-related Products Directive 2009/125/EC
Directiva Diseño Ecológico Productos Con Energía 2009/125/CE

applying the following harmonized standards in particular
aplicando las siguientes normas armonizadas en particular

LVD: EN 60335-1:2012 + AC:2014 + A11:2014
EN 60335-2-30:2010 + A11:2012

EMC: EN 61000-6-2:2006
EN 61000-6-3:2007 + A1:2012
EN 55014-1:2008 + A1:2009 + A2:2012
EN 55014-2:2015

RoHS: EN 50581:2012

Date / Fecha
Name / Nombre
Position / Cargo

03/05/2016
Jordi Oltra Orta
General Manager / Director General





Model <i>Modelo</i>	WINDBOX M 2000 E			
Airflow <i>Caudal</i>	3600	m3/h		
Blowers <i>Ventiladores</i>	1,88	A	0,424	kW 230 V/50Hz
Heating capacity <i>Calefacción</i>	80/60 °C		60/40 °C	
Water Coil <i>Agua</i>		kW		kW
Electric Coil <i>Batería Eléctrica</i>	6/12/18	kW	400V~3 50Hz	
Serial Number <i>Número de Serie</i>	2015-07-06 / 61.990			

Air curtain identification

Each air curtain is identified by a unique serial number printed in a label located inside the door service. There is also indicated the model and their technical characteristics (flow, fans technical characteristics and power heating).

It is indispensable to have this number to facilitate possible replacements or technical information of the air curtain in question.

If you detect some error in this manual, we'll be pleased to receive your *feedback*, it helps us to improve even more.

Airtècnics reserves the right to modify some of the specifications in this manual.

GUARANTEE

Your air curtain is guaranteed for a period of one year from the date of purchase. We will adjust, repair or replace at our discretion from our warehouse any defect, system failure or part found to be defective. The assembly cost out of our warehouse is at buyer expense. The products that, in our eyes, have been inadequately used, incorrectly manipulated, improperly installed, connected to different nominal tensions, modified, repaired by non-authorized workers or that have suffered damages during transport are totally excluded from the guarantee.

To validate the guarantee it should be correctly filled and enclosed with the invoice that vouches for the buying date. If it is manipulated, it will lose all validity.

It is the buyer's responsibility to take the necessary safety measures because in case of a failure or mistake in one of our products, no damages to third parties, sets or installations will occur.

✂ -----

Guarantee draft

Air curtains data:

Model: Series number:
 Invoice date: Invoice number:

Buyer data:

Name:
 Address:
 Country: Phone: Fax:

Seller data:

Name:
 Address:
 Country: Phone: Fax:

Buyer signature and stamp

Seller signature and stamp